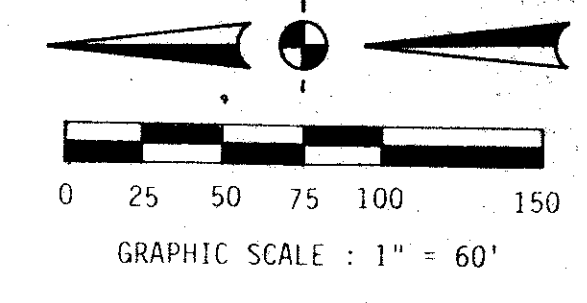


42/191

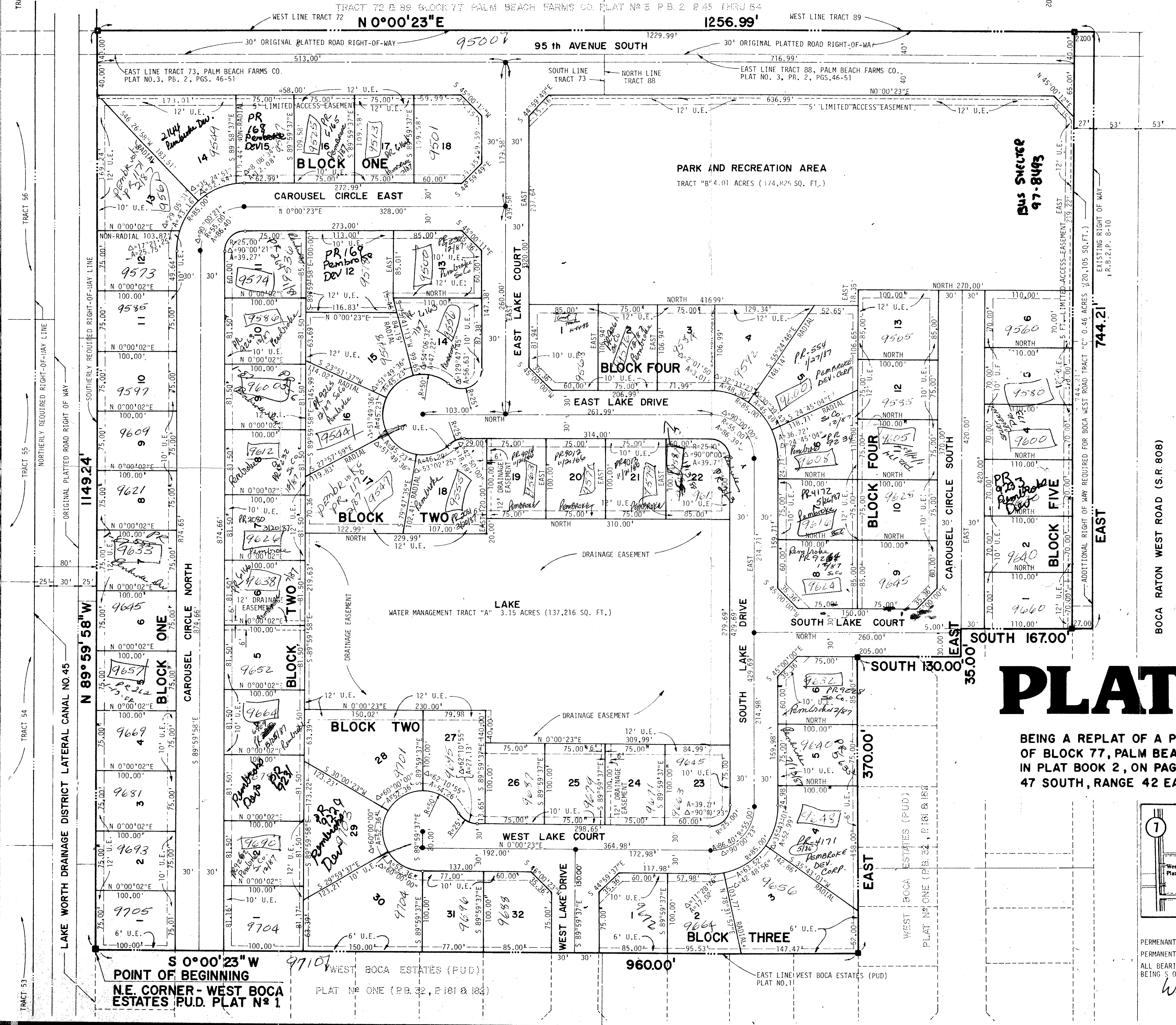
WEST BOCA LAKE

(PART OF WEST BOCA ESTATES, P.U.D.)

191



STATE OF FLORIDA
 COUNTY OF PALM BEACH
 THIS PLAT WAS FILED FOR
 RECORD AT
 THIS DAY OF
 AD, 1981 AND DULY RECORDED
 IN PLAT BOOK ON PAGES
 AND
 JOHN B. DUNKLE, CLERK
 CIRCUIT COURT
 BY: DC.



ACREAGE SUMMARY

ROAD RIGHT OF WAY	7.70 ACRES
BLOCK ONE (18 LOTS)	3.44 ACRES
BLOCK TWO (32 LOTS)	6.74 ACRES
BLOCK THREE (6 LOTS)	1.39 ACRES
BLOCK FOUR (13 LOTS)	2.56 ACRES
BLOCK FIVE (6 LOTS)	1.06 ACRES
TRACT "A", LAKE	3.15 ACRES
TRACT "B", PARK AND RECREATION AREA	4.61 ACRES
TRACT "C", ADDITIONAL RIGHT OF WAY, BOCA WEST ROAD	0.46 ACRES
TOTAL	30.51 ACRES

PLANNED UNIT DEVELOPMENT DATA

TOTAL AREA THIS PLAT	30.51 ACRES
LESS ROAD RIGHT-OF-WAY	7.70 ACRES
LESS TRACT "C"	0.46 ACRES
EFFECTIVE BASE RESIDENTIAL AREA	22.35 ACRES
TOTAL UNITS THIS PLAT	75 UNITS
OPEN SPACE THIS PLAT	18.94 ACRES
DENSITY (UNITS PER ACRE)	2.46

TURNOUT REQUIRED

PLAT N° ONE

BEING A REPLAT OF A PORTION OF TRACTS 73, 74, 75, 76, 85, 86, 87 & 88 OF BLOCK 77, PALM BEACH FARMS COMPANY PLAT NUMBER 3, AS SHOWN IN PLAT BOOK 2, ON PAGES 45 THRU 54, LYING IN SECTION 18, TOWNSHIP 47 SOUTH, RANGE 42 EAST, PALM BEACH COUNTY, FLORIDA

0335-001

LOCATION SKETCH

PERMANENT REFERENCE MONUMENTS ARE INDICATED THIS WAY

PERMANENT CONTROL POINTS ARE INDICATED THIS WAY

ALL BEARINGS ARE BASED ON THE EAST LINE OF WEST BOCA ESTATES (P.U.D.) BEING S 00°00'23"W.

SCALE NOTED

DATE 78041

BY WALKER

WEST BOCA LAKE

42/191

EDM

E D M SURVEYING & MAPPING INC.
 2300 PALM BEACH LAKES BOULEVARD
 SUITE 100 - 305 684 3770
 WEST PALM BEACH, FL 33409